

Seattle-Tacoma International Airport

Runway 16C/34C Reconstruction Project



RW 16C/34C Pavement Inspections



Inspection in October, 2009

RW 16C/34C Pavement Inspections



Inspection in April, 2010

FOD on RW 16C/34C



September 17, 2012 FOD struck by DH-8.

(Note: The picture actually shows two patches. The patch that came out is the hole was on the left. When MX arrived they pried off the patch to the right and filled both at the same time.

FOD on RW 16C/34C

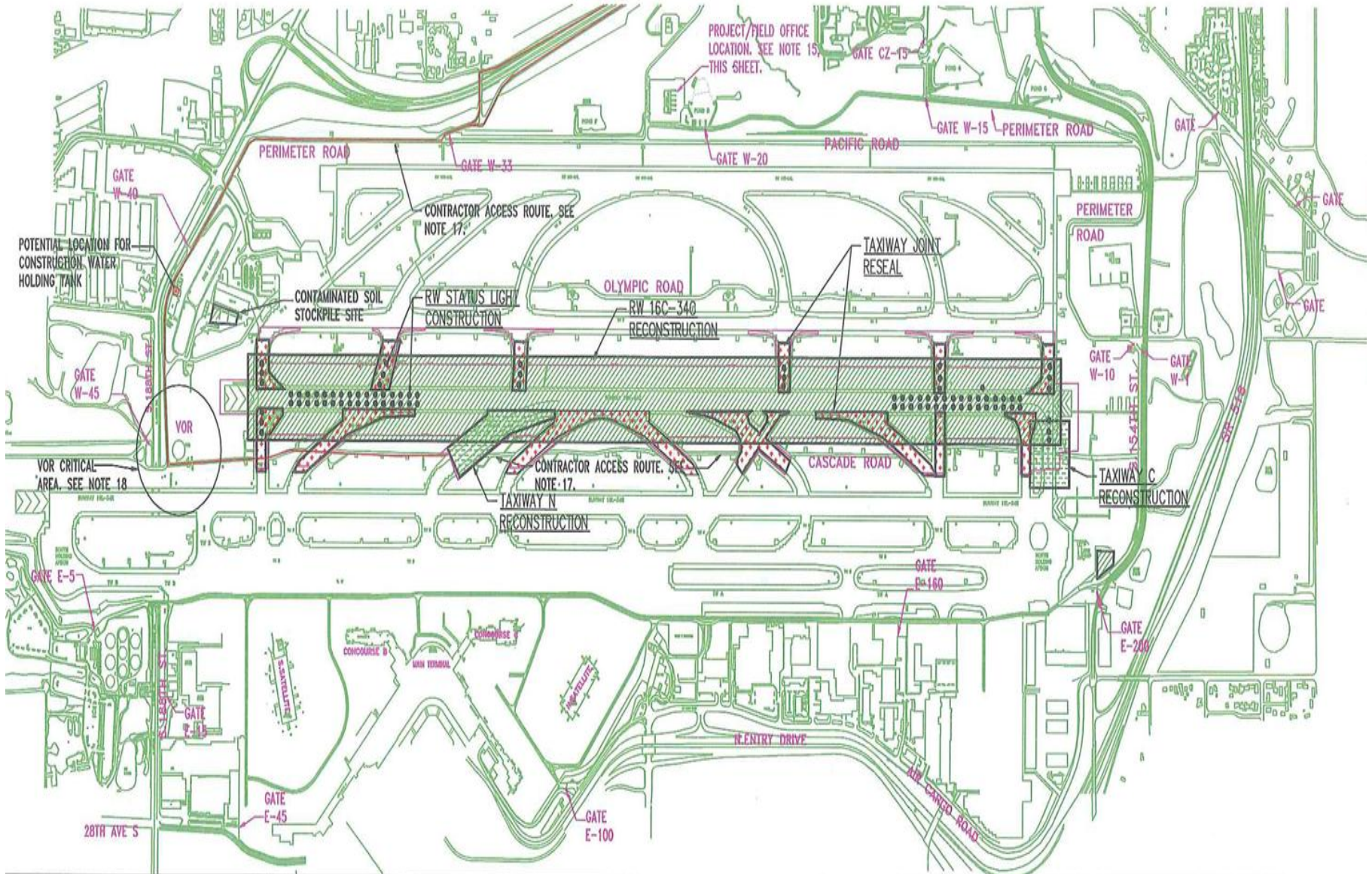


August 23, 2013 Patch Failure

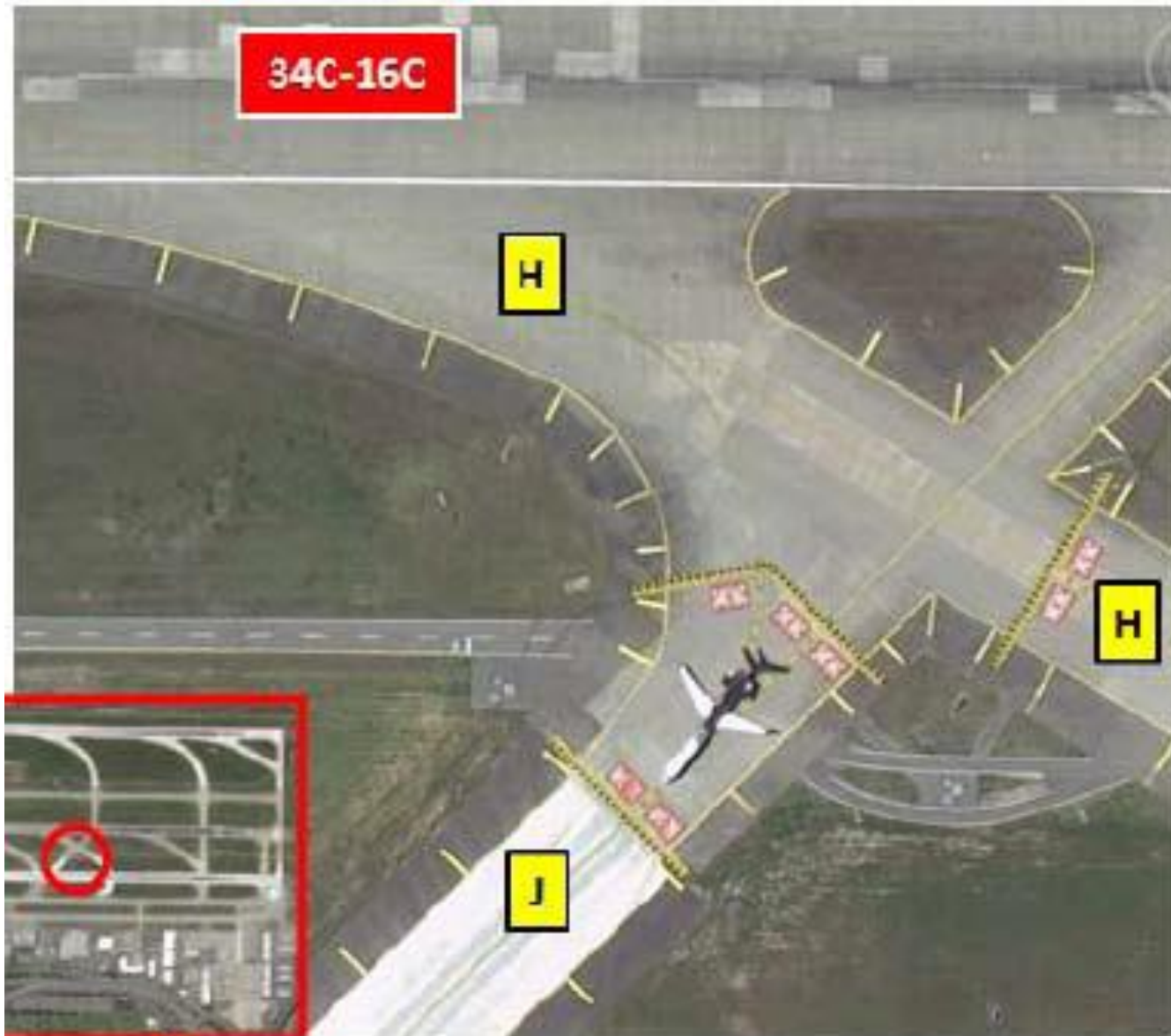


December 30, 2013 Patch Failure

RW16C/34C Reconstruction Overview



Taxiway H/J Incursion Remediation



Questions?

